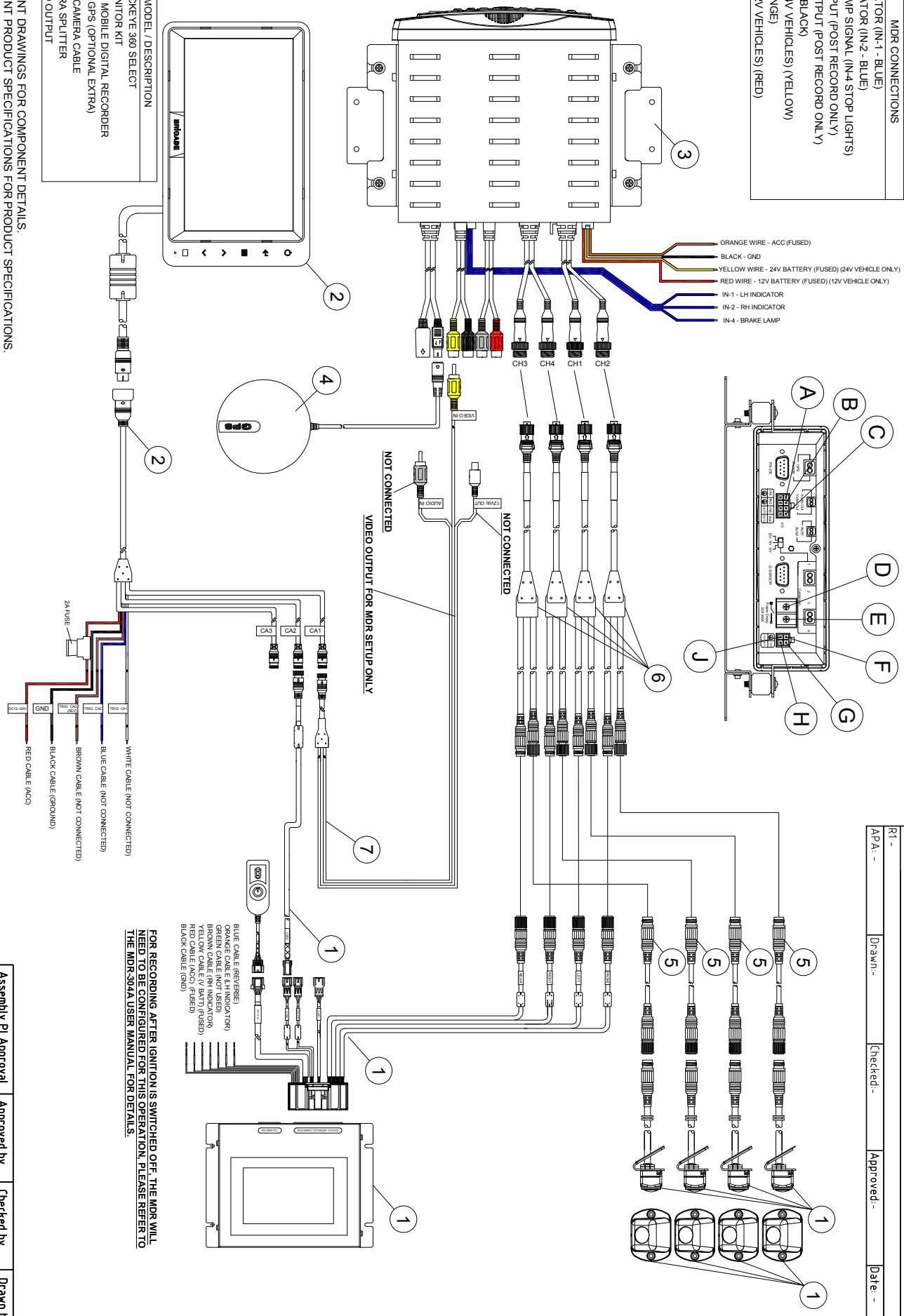


ITEM	MDR CONNECTIONS
①	L/H INDICATOR (IN-1 - BLUE)
②	RAKE LAMP SIGNAL (IN-2 - BLUE)
③	V BATT INPUT (POST RECORD ONLY)
④	DELAY OUTPUT (POST RECORD ONLY)
⑤	GROUND (BLACK)
⑥	V BATT (24V VEHICLES) (YELLOW)
⑦	ACC (ORANGE)
⑧	V BATT (12V VEHICLES) (RED)



ITEM	MODEL / DESCRIPTION
①	BN360-000 - BACKVIEW 360 SECT
②	VBV-770M - MONITOR KIT
③	MDR-304A-500 - MOBILE DIGITAL RECORDER
④	GPS-6015-050 - GPS (OPTIONAL EXTRA)
⑤	BN360-L-1XXX - CAMERA CABLE
⑥	AC-304 - CAMERA SPLITTER
⑦	AC-024 - VIDEO SPLITTER

**NOTES:**

- REFER TO COMPONENT DRAWINGS FOR COMPONENT DETAILS.
- REFER TO COMPONENT PRODUCT SPECIFICATIONS FOR PRODUCT SPECIFICATIONS.
- MDR WILL NEED TO BE SET TO NTSC MODE BY PRESSING THE LEFT ARROW AND PAUSE BUTTONS AT THE SAME TIME ON THE MDR KEY PAD.
- BN380-LXXX CABLE LENGTH WILL BE DEPENDANT ON APPLICATION.
- VBV-L4XX CABLE MAY BE REQUIRED TO CONNECT AC-024 TO MONITOR DEPENDING ON APPLICATION.
- REFER TO MDR-304A USER MANUAL AND BN360 INSTALLATION GUIDE FOR INSTALLATION, CALIBRATION & CONFIGURATION OF THE SYSTEM.

**PROPRIETARY NOTICE**

THIS DESIGN AND TECHNICAL INFORMATION APPEARING ON THIS DRAWING IS THE PROPERTY OF BRIGADE ELECTRONICS AND IS DISCLOSED IN CONFIDENCE. IT IS NOT TO BE COPIED, REPRODUCED, REVEALED TO OR EXPLOITED BY OTHERS, EITHER IN WHOLE OR IN PART WITHOUT THE EXPRESS WRITTEN CONSENT OF BRIGADE ELECTRONICS.

Revision Notes			
R1 -	Drawn -	Checked -	Approved -
APA -			Date -

FOR RECORDING AFTER IGNITION IS SWITCHED OFF, THE MDR WILL NEED TO BE CONFIGURED FOR THIS OPERATION, PLEASE REFER TO THE MDR-304A USER MANUAL FOR DETAILS.



Assembly PI Approval		Approved by		Checked by		Drawn by	
	Angle of Projection	B.CHILDS	M.POTTER	R.BATES			
Units	Scale	Released	Assembly Ref				
mm	N/A	15/12/14					
Status	Part No	SELECT 360 WITH MDR-304A					
RELEASED	4483A	BE-003049-00-14					